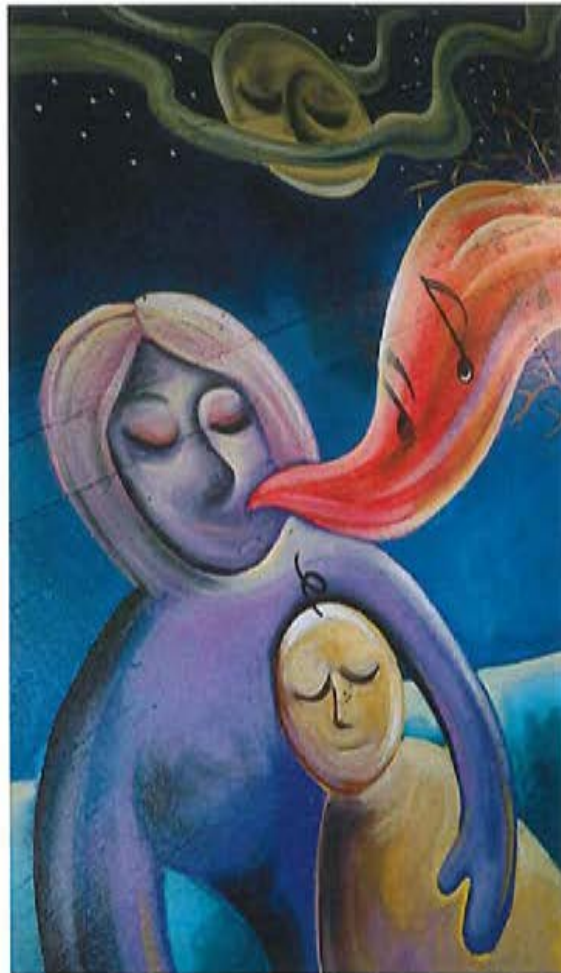


Kitsilano War Memorial Community Association



Annual General Meeting 2015



TABLE OF CONTENTS

BOARD OF DIRECTORS

KITSILANO COMPLEX STAFF

2014 A.G.M. MINUTES

AUDITOR'S REPORT AND FINANCIAL STATEMENTS

PRESIDENT'S REPORT 2015

COMMITTEE REPORTS 2015

- PROGRAM COMMITTEE
- SENIORS COMMITTEE
- FUNDRAISING COMMITTEE
- BUILDING COMMITTEE
- GARDEN COMMITTEE
- MARKETING COMMITTEE

COMMUNITY ENGAGEMENT REPORT 2015

RINK REPORT 2015

FITNESS CENTRE REPORT 2015

SUPERVISOR OF RECREATION SERVICES REPORT 2015

REMEMBERING DOROTHEA "DOT" ROGERS – HONOURARY LIFE MEMBER

KITSILANO WAR MEMORIAL COMMUNITY CENTRE ASSOCIATION
BOARD OF DIRECTORS

2015

Executive

President	Robert Haines
Secretary	Alfred Lam
Treasurer	Arlene Brown
Vice President	Jerry Fast
Vice President	Heidi Henderson
Vice President	Don Shaw

Members at Large

Judy Anderson
Lawson Branch
Michelle Casavant
Liz Cochran
Dominique Dion
James MacDonald
Pamela MacDonald
Gabriel Pliska
Amanda Robbins
Chris Temmerman
Nona Thompson
Rosalba Tuttle
Annette Whitehead

Honorary Life Members

Peg Hillman

KITSILANO WAR MEMORIAL COMMUNITY CENTRE
KITSILANO COMPLEX STAFF

2015

Community Recreation Supervisor	Doug Taylor Bob Hindley (2016)		
Recreation Programmer II	Cathy Almaas Celia Deluca Grant Matsuda (2016) Heather Rooke (2016)		
Recreation Programmer Assistants	Nicole Bird Janice Kwan Jeremy Quan Oren Thrush Luke Vasak		
Fitness Programmer	Larry Turko		
Rink Programmer	Grant Matsuda/Leeza Woo		
Recreation Facility Clerk	Sam Placzek		
Program Assistant II	Jay Black		
Fitness Centre Worker (RPT)	Elaine Leong		
Cashier Clerk Typist	Filled with Auxiliary Staff		
Youth Leaders	Jeremy Quan Janice Kwan Oren Thrush		
Association Bookkeeper	Tanya Donaldson		
Community Engagement Coordinator	Jennifer Ruffelle		
Cashier Receptionists+ Program Assistant II's	Nicole Bird Keisha Callender Erin Green Sunita Lucertini De Penney Oren Thrush	Joanne Carman Nicolle Koeppel Ian McLellan Jeremy Quan Luke Vasak	Kim Cook Janice Kwan Andy Park Megan Quan Joe Walters

Fitness Centre Staff

Tonya Allen
Michelle Brezinski
Karen Everall
Sead Lukovic

Kapil Anand
Mark Cartwright
Christian Lacsam
Tracey Welsford

Rink Staff

Amber Bell
Thomas DeMello
Galya Goede
Karlee Kent
Jodie Leong
Nevena Vojic

Andrew Burant
Trevor Desjardin
Karl Gulbransen
Janice Kwan
Katherine McDonald
Kelsey Ware

Natasha Chau
Marilyn Everett
Ryan Hirayama
Adora Kwon
Jacob Pippus
Ian Weiss

Jamie Creamore
Michael Fong
Katie Hu
Ryan Lee
Courtney Tam
Matthe Yeung

Tiggy Winkle Preschool Supervisors

Angela Karellas
Shireen Charania
Jessica Fosbrook

**TLC Special Needs Youth Program Supervisor
TLC Special Needs Youth Program Assistant**

Erin Green/Jeremy Pratt
Oren Thrush

Maintenance Technician

Alfredo Labrador

Maintenance Lead Hands

Peter Evans
Achilles Porras
Peter Veljickovic

Willem Muller
Peter Thiel

Building Service Workers

Dante Andres
Gauvain Gonzales

Nicetas Caringal
Ranjit Purewal



**Kitsilano Community Centre
Ice Rink and Fitness Centre**

2690 Larch Street, Vancouver, BC V6K 4K9

Telephone: 604.257.6976 Facsimile: 604.257.6996

Jointly Operated by Vancouver Board of Parks and Recreation and Kitsilano War Memorial
Community Centre Association

Kitsilano War Memorial Community Centre Association 2014 AGM
Minutes of Meeting Held in Snowy's Lounge, at Kitsilano Community Centre on
Thursday, April 21, 2015

The meeting was called to order at 1901 hrs. with Robert Haines the Chair. A quorum was present.

Regrets: None

1. Call to Order

Robert Haines called the meeting to order.

3. Approval of 2014 AGM Minutes of Meeting

Jerry Fast made motion to accept the Minutes of Meeting for 2014.

Moved by Jerry Fast

Seconded by Rho Tuttle

Motion Carried

4. Auditor's Report and Financial Statements

Robert Haines called upon Arlene Brown, the Treasurer, to introduce the auditor to present the 2014 Financial Statements.

Arlene Brown introduced Ms. Kelly Chan from the accounting firm of Tompkins, Wozny, Miller & Company

Kelly gave a detailed review of the finances for 2014.

Arlene Brown made a motion to retain Tompkins, Wozny, Miller & Co. as auditors for 2015.

Moved by Arlene Brown

Seconded by Nona Thompson

Motion Carried

5. PRESIDENT'S REPORT for 2014 A written report was submitted

Robert Haines gave the President's report.

6. COMMITTEE REPORTS for 2014

- **Programme Committee** A written report was submitted

Arlene Brown gave detailed comments on the Programme Committee for 2014.

- **Seniors' Committee** A written report was submitted

Nona Thompson gave detailed summary on the Seniors Committee for 2014.

- **Fundraising Committee** A written report was submitted

Don Shaw gave detailed summary on the Seniors Committee for 2014.

- **Building Committee** A written report was submitted

Alf Lam gave the report on the Building Committee for 2014.

- **Gardening Committee** A written report was submitted

Gabriel Pliska gave the report on the Gardening Committee

- **Marketing Committee** A written report was submitted

James MacDonald gave the report on the Marketing Committee

7. **FITNESS COMMITTEE REPORT for 2014** A written report was submitted

Larry Turko gave the report on the Fitness Committee

8. **RINK REPORT for 2014** A written report was submitted

Doug Taylor in place of Grant Matsuba, gave the Ice Rink report for 2014.

9. **COMMUNITY RECREATION COORDINATOR'S REPORT for 2014**

A written report was submitted.

Doug Taylor gave the Recreation Coordinator's report.

10. **ELECTION OF OFFICERS**

Arlene Brown presented the slate of nominees for officers for the 2015 – 2016 Kitsilano War Memorial Community Centre Association.

As there were no nominations from the floor, the nominees were declared elected by acclamation.

11. **OATH OF OFFICE**

Robert Haines called upon Erin Shum, the Park Board liaison, to conduct the oath of office for the members of the Kitsilano Community Centre Association for 2015 - 2016.

The members of the Kitsilano War Memorial Community Centre Association for 2015 – 2016 are as follows:

Executive – President	Robert Haines	End of 2 nd year term
Vice President	Jerry Fast	End of 2 nd year term
Vice President	Don Shaw	End of 2 nd year term
Treasurer	Arlene Brown	New 2 year term
Secretary	Alfred Lam	New 2 year term
Members at Large -		
	Lawson Branch	New 2 year term
	Liz Cochran	End of 2 nd year term
	Heidi Henderson	End of 2 nd year term
	James Macdonald	End of 2 nd year term
	Gabriel Pliska	New 2 year term
	Jennifer Ruffelle	New 2 year term
	Chris Temmerman	New 2 year term
	Nona Thompson	End of 2 nd year term
	Rosalba (Rho) Tuttle	End of 2 nd year term
	Annette Whitehead	End of 2 nd year term
Honourary Life Members –		
	Peg Hillman	
	Dorothea Rogers	

12. **Photo of Kitsilano War Memorial Community Centre Association for 2015 - 2016**

The photo of the Kitsilano War Memorial Community Centre Association was taken by Celia Deluca

13. **Other Business**

There was no other business

ADJOURNMENT

The meeting adjourned at 1952 hrs.

Motion to Adjourn by Don Shaw

Minutes of Meeting taken by Alfred G. Lam, Association Secretary

FINANCIAL STATEMENTS

**KITSILANO WAR MEMORIAL
COMMUNITY CENTRE ASSOCIATION**

December 31, 2015

***TW* TOMPKINS, WOZNY, MILLER & Co.**
Chartered Professional Accountants

A partnership of incorporated professionals.

INDEPENDENT AUDITOR'S REPORT

To the Members of
Kitsilano War Memorial Community Centre Association

Report on the Financial Statements

We have audited the accompanying financial statements of Kitsilano War Memorial Community Centre Association which comprise the statement of financial position as at December 31, 2015, and the statements of changes in fund balances, operations and cash flows for the year then ended, and a summary of significant accounting policies and other explanatory information.

Management's Responsibility for the Financial Statements

Management is responsible for the preparation and fair presentation of these financial statements in accordance with Canadian accounting standards for not-for-profit organizations, and for such internal control as management determines is necessary to enable the preparation of financial statements that are free from material misstatement, whether due to fraud or error.

Auditor's Responsibility

Our responsibility is to express an opinion on these financial statements based on our audit. We conducted our audit in accordance with Canadian generally accepted auditing standards. Those standards require that we comply with ethical requirements and plan and perform the audit to obtain reasonable assurance about whether the financial statements are free from material misstatement.

An audit involves performing procedures to obtain audit evidence about the amounts and disclosures in the financial statements. The procedures selected depend on the auditor's judgment, including the assessment of the risks of material misstatement of the financial statements, whether due to fraud or error. In making those risk assessments, the auditor considers internal control relevant to the Association's preparation and fair presentation of the financial statements in order to design audit procedures that are appropriate in the circumstances, but not for the purpose of expressing an opinion on the effectiveness of the Association's internal control. An audit also includes evaluating the appropriateness of accounting policies used and the reasonableness of accounting estimates made by management, as well as evaluating the overall presentation of the financial statements.

We believe that the audit evidence we have obtained is sufficient and appropriate to provide a basis for our audit opinion.

Opinion

In our opinion, the financial statements present fairly, in all material respects, the financial position of Kitsilano War Memorial Community Centre Association as at December 31, 2015, and the results of its operations and its cash flows for the year then ended in accordance with Canadian accounting standards for not-for-profit organizations.

Report on Other Legal and Regulatory Requirements

As required by the British Columbia Society Act, we report that the accounting principles used in these financial statements have been applied on a basis consistent with that of the preceding year.

Tompkins, Wozny, Miller & Co.

Vancouver, Canada
March 17, 2016

Chartered Professional Accountants

Kitsilano War Memorial Community Centre Association

Incorporated Under the Society Act of British Columbia

STATEMENT OF FINANCIAL POSITION

As at December 31

	2015		2014	
	Operating Fund \$	Capital Asset Fund \$	Totals \$	Totals \$
ASSETS				
Current				
Cash - operating	222,025	—	222,025	142,648
- gaming	613	—	613	613
Accounts receivable <i>[note 4]</i>	33,838	—	33,838	81,649
Prepaid expenses	4,147	—	4,147	3,753
Total current assets	260,623	—	260,623	228,663
Long-term investments <i>[note 3]</i>	425,000	500,000	925,000	900,000
Capital assets <i>[note 5]</i>	—	275,368	275,368	317,047
Total assets	685,623	775,368	1,460,991	1,445,710
LIABILITIES AND FUND BALANCES				
Current liabilities				
Accounts payable and accruals <i>[note 6]</i>	121,741	—	121,741	90,079
Deferred contributions and grants	7,045	—	7,045	10,633
Unearned revenue	85,832	—	85,832	99,745
Total current liabilities	214,618	—	214,618	200,457
Deferred contributions related to capital assets <i>[note 7]</i>	—	71,156	71,156	77,085
Total liabilities	214,618	71,156	285,774	277,542
Fund balances				
Unrestricted	471,005	—	471,005	428,206
Invested in capital assets	—	204,212	204,212	239,962
Internally restricted <i>[note 8]</i>	—	500,000	500,000	500,000
Total fund balances	471,005	704,212	1,175,217	1,168,168
Total liabilities and fund balances	685,623	775,368	1,460,991	1,445,710

See accompanying notes to the financial statements

On behalf of the Board:

Director_____
Director

STATEMENT OF CHANGES IN FUND BALANCES

Year ended December 31

		Capital Asset Fund		
	Operating Fund	Invested in Capital Assets	Internally Restricted	Total
	\$	\$	\$	\$
2015				
Balance, beginning of year	428,206	239,962	500,000	1,168,168
Revenue over (under) expenses for the year	44,273	(37,224)	—	7,049
Investment in capital assets	(1,474)	1,474	—	—
Balance, end of year	471,005	204,212	500,000	1,175,217
2014				
Balance, beginning of year	305,674	276,966	500,000	1,082,640
Revenue over (under) expenses for the year	122,532	(37,004)	—	85,528
Balance, end of year	428,206	239,962	500,000	1,168,168

See accompanying notes to the financial statements

STATEMENT OF OPERATIONS

Year ended December 31

	2015			2014
	Operating Fund	Capital Asset Fund	Totals	Totals
	\$	\$	\$	\$
REVENUE				
Program operations <i>[schedule]</i>	960,316	—	960,316	969,440
Rentals	21,855	—	21,855	46,009
Interest	17,205	—	17,205	17,572
Vending, promotions and other	8,401	—	8,401	4,453
Amortization of deferred contributions <i>[note 7]</i>	—	5,929	5,929	5,929
Shower program	4,394	—	4,394	310
Donations	3,651	—	3,651	8,025
Garden Project	—	—	—	1,000
	1,015,822	5,929	1,021,751	1,052,738
EXPENSES				
Program operations <i>[schedule]</i>	651,691	—	651,691	658,700
Group One wages	170,402	—	170,402	130,359
Amortization of capital assets	—	43,153	43,153	42,933
Community engagement	33,873	—	33,873	—
Credit card merchant fees and bank charges	23,538	—	23,538	27,707
Shower program	20,718	—	20,718	11,782
Advertising	16,539	—	16,539	13,820
Promotion and other	15,816	—	15,816	8,186
Minor equipment	10,935	—	10,935	43,250
Accounting	9,454	—	9,454	10,155
Audit	7,016	—	7,016	6,860
Rentals	5,063	—	5,063	7,023
Supplies and postage	4,282	—	4,282	4,548
Garden Project	1,652	—	1,652	1,525
Education	570	—	570	362
	971,549	43,153	1,014,702	967,210
Revenue over (under) expenses for the year	44,273	(37,224)	7,049	85,528

See accompanying notes to the financial statements

STATEMENT OF CASH FLOWS

Year ended December 31

	2015 \$	2014 \$
OPERATING ACTIVITIES		
Revenue over expenses for the year	7,049	85,528
Items not affecting cash:		
Amortization of capital assets	43,153	42,933
Amortization of deferred contributions related to capital assets	(5,929)	(5,929)
Changes in non-cash working capital:		
Accounts receivable	47,811	13,432
Prepaid expenses	(394)	672
Accounts payable and accruals	31,662	(34,702)
Deferred contributions and grants	(3,588)	—
Unearned revenue	(13,913)	(27,669)
Cash provided by operating activities	105,851	74,265
INVESTING ACTIVITIES		
Net purchase of investments	(25,000)	(148,500)
Acquisition of capital assets	(1,474)	—
Cash used in investing activities	(26,474)	(148,500)
Increase (decrease) in cash during the year	79,377	(74,235)
Cash, beginning of year	143,261	217,496
Cash, end of year	222,638	143,261
Cash consist of:		
Cash - operating	222,025	142,648
- gaming	613	613
	222,638	143,261

See accompanying notes to the financial statements

SCHEDULE OF PROGRAM OPERATIONS

Year ended December 31

	2015	2014
	\$	\$
Program revenue		
Adult	233,809	223,044
Children	156,641	156,025
Fitness	47,722	53,112
Preschool	197,416	222,106
Senior	19,614	23,177
Special events	14,129	15,756
Special needs	76,569	76,901
Summer	89,997	88,377
Tiggy Winkle Preschool	123,171	109,525
Youth	1,248	1,417
	960,316	969,440
Direct program expenses		
Adult	144,931	140,897
Children	105,162	98,326
Fitness	32,447	33,459
Kitchen	—	552
Preschool	135,916	137,260
Senior	16,782	21,056
Special events	18,533	17,020
Special needs	55,354	63,318
Summer	66,324	66,552
Tiggy Winkle Preschool	75,674	79,340
Youth	568	920
	651,691	658,700
Net contribution from programs	308,625	310,740

See accompanying notes to the financial statements

NOTES TO FINANCIAL STATEMENTS

December 31, 2015

1. PURPOSE OF THE ASSOCIATION

The Kitsilano War Memorial Community Centre Association (the "Association") is a not-for-profit organization incorporated under the Society Act of British Columbia. The Association, operating in conjunction with the Vancouver Park Board, provides activities to area residents on a user fee basis.

The existing Joint Operating Agreement (JOA) with Vancouver Park Board may be terminated by either party giving three (3) months' notice in writing addressed to the Chairman of the Vancouver Park Board or the President of the Association.

On October 4, 2012, the Vancouver Park Board provided a proposal to each of the community associations, including the Association, which may alter the roles and responsibilities of the Association.

The Association is one of a group of the community associations which have been in discussions with the Vancouver Park Board over this proposal.

Use of the Kitsilano War Memorial Community Centre premises as well as the providing of certain operating expenses, such as various staff costs, are provided to the Association pursuant to the JOA with the Park Board. The value of the use of the facilities as well as these additional operating expenses has not been reflected in the financial statements.

2. SIGNIFICANT ACCOUNTING POLICIES

These financial statements were prepared in accordance with Canadian accounting standards for not-for-profit organizations and include the following significant accounting policies:

Use of Estimates

The preparation of financial statements in conformity with Canadian accounting standards for not-for-profit organizations requires management to make estimates and assumptions that affect the reported amounts of assets and liabilities and disclosure of contingent assets and liabilities at the date of the financial statements and the amounts of revenues and expenses reported during the year. Significant areas requiring the use of management estimates relate to the determination of net recoverable value of assets, in particular as it relates to useful lives of capital assets and the determination of the deferred portion of grants. Actual results could differ from these estimates.

Revenue Recognition

The Association follows the deferral method in accounting for contributions. Restricted contributions are recognized as revenue in the year in which the related expenses are incurred. Unrestricted contributions are recognized as revenue when they are received or receivable if the amount receivable can be reasonably estimated and its collection is reasonably assured.

NOTES TO FINANCIAL STATEMENTS

December 31, 2015

2. SIGNIFICANT ACCOUNTING POLICIES (CONT'D)

Revenue from all other sources other than direct access gaming is recognized when the respective program or service is provided.

Direct Access Gaming

Proceeds received from direct access gaming funding are recorded as revenue or deferred contributions related to capital assets, if applicable, in the year the related expenditures are incurred.

Fund Accounting

Revenues and expenses related to activities and other programs are reported in the Operating Fund.

The Capital Asset Fund reports the assets, liabilities, revenues and expenses related to the Association's capital assets.

Use of Kitsilano War Memorial Community Centre and the Providing of Operating Expenses

Use of Kitsilano War Memorial Community Centre premises as well as the providing of certain operating expenses, such as various staffing costs, are provided to the Association pursuant to a joint operating agreement with the Vancouver Board of Parks and Recreation. The value of the use of the facilities as well as these additional operating expenses has not been reflected in the financial statements.

Measurement of Financial Instruments

The Association initially measures its financial assets and financial liabilities at fair value. The Association subsequently measures all its financial assets and financial liabilities at amortized cost.

Financial assets measured at amortized cost include cash, long-term investments (term deposits) and accounts receivable. Financial liabilities measured at amortized cost includes accounts payable and accruals.

Financial assets measured at amortized cost are tested for impairment when there are indicators of impairment. The amount of the write-down is recognized in net income. The previously recognized impairment loss may be reversed to the extent of the improvement, directly or by adjusting the allowance account, provided it is no greater than the amount that would have been reported at the date of the reversal had the impairment not been recognized previously. The amount of the reversal is recognized in net income.

Cash

Cash is defined as cash on hand, cash on deposit, and net of cheques issued and outstanding at the year-end.

NOTES TO FINANCIAL STATEMENTS

December 31, 2015

2. SIGNIFICANT ACCOUNTING POLICIES (CONT'D)

The Association's statement of cash flows is prepared on a net cash basis and cash flows from operating activities are reported using the indirect method.

Capital Assets

Purchased capital assets are recorded in the Capital Assets Fund at cost. Contributed capital assets are recorded in the Capital Asset Fund at fair value at the date of contribution.

Amortization is provided on a straight-line basis at the following rates:

- Furniture, equipment and computers 5 years
- Association premises 20 years

Amortization expense is recorded in the Capital Asset Fund.

Contributed Services

Volunteers contribute their time to assist the Association in carrying out its service delivery activities. Because of the difficulty of determining their fair value, contributed services are not recognized in the financial statements.

3. INVESTMENTS

The Association's investments are term deposits which bear interest rates ranging from 1.3% to 3.05% and have maturity dates ranging from May 27, 2016 to October 20, 2017.

4. ACCOUNTS RECEIVABLE

	2015	2014
	\$	\$
Vancouver Board of Parks and Recreation - online registrations	12,159	58,111
Interest	10,283	10,990
Operations	11,396	12,548
	33,838	81,649
Allowance for doubtful accounts	—	—
	33,838	81,649

NOTES TO FINANCIAL STATEMENTS

December 31, 2015

5. CAPITAL ASSETS

	Cost \$	Accumulated Amortization \$	Net Book Value \$
2015			
Furniture, equipment and computers	408,505	405,358	3,147
Association premises	642,931	370,710	272,221
	1,051,436	776,068	275,368
2014			
Furniture, equipment and computers	407,038	395,649	11,389
Association premises	642,931	337,273	305,658
	1,049,969	732,922	317,047

6. ACCOUNTS PAYABLE AND ACCRUALS

	2015 \$	2014 \$
Government remittances - GST	1,596	2,526
- Payroll taxes	3,703	1,801
- WorkSafeBC	1,108	966
Wages payable	14,067	11,293
Vancouver Board of Parks and Recreation	77,198	55,249
Operations	24,069	18,244
	121,741	90,079

7. DEFERRED CONTRIBUTIONS RELATED TO CAPITAL ASSETS

Deferred contributions related to capital assets reported in the Capital Asset Fund represent the unamortized portion of restricted contributions with which capital assets were acquired. The balance in the account is as follows:

	2015 \$	2014 \$
Balance, beginning of year	77,085	83,014
Less: Amounts amortized to revenue	(5,929)	(5,929)
Balance, end of year	71,156	77,085

NOTES TO FINANCIAL STATEMENTS

December 31, 2015

8. INTERNALLY RESTRICTED FUND BALANCES

	\$
2015	
Internally restricted for expenditures to be incurred on or before December 31, 2016	
- Capital equipment and improvements	330,000
Internally restricted for expenditures to be incurred on or before December 31, 2017	
- Community engagement	120,000
- Operating contingency	50,000
Total	500,000
2014	
Internally restricted for expenditures to be incurred on or before December 31, 2015	
- Capital equipment and improvements	330,000
Internally restricted for expenditures to be incurred on or before December 31, 2016	
- Operating contingency	70,000
- Sound abatement	70,000
- Needs assessment	30,000
Total	500,000

9. FINANCIAL INSTRUMENTS - RISK INFORMATION

The Association is exposed to various risks through its financial instruments. The following analysis presents the Association's exposures to significant risk as at December 31, 2015.

Credit Risk

The Association is exposed to credit risk with respect to its cash, long-term investments (term deposits) and accounts receivable. The Association assesses, on a continuous basis, accounts receivable on the basis of amounts it is virtually certain to receive based on their net realizable value. Cash and term deposits are held by a Canadian chartered bank.

Liquidity Risk

Liquidity risk is the risk of being unable to meet cash requirements or fund obligations as they become due. It stems from the possibility of a delay in realizing the fair value of financial instruments.

The Association manages its liquidity risk by constantly monitoring forecasted and actual cash flows and financial liability maturities, and by holding assets that can be readily converted into cash.

NOTES TO FINANCIAL STATEMENTS

December 31, 2015

9. FINANCIAL INSTRUMENTS - RISK INFORMATION (CONT'D)

Interest Rate Risk

The Association has variable interest rate term deposit investments which are subject to periodic review. Changes in the bank's prime lending rate or other rates can cause fluctuations in interest payments and cash flows.

In the opinion of management, the Association is not exposed to other significant risk on its financial instruments.

Kitsilano Community Association
Annual General Meeting
Presidents' Report 2015

There are a lot of interesting happenings going on in this fine place every day. I urge you to read the full reports, but here follows some interesting tidbits.

Community Engagement

"I'm so proud to be part of this organization" says Jenn Ruffelle, our newly hired Community Engagement Coordinator, who is already on six committees and three West Side Hubs dealing with the needs of Child Development, Seniors, and Newcomers. This is in addition to the planning for Khats & Kitsfest Festivals and she also has a seat on the PAC at Kits High. This is all within the first six months on the job!

"It's shaping up to be an action packed year!" says our driven diva of Community Engagement!

Other Takeaways -Older Adults and Special Events

Although the community does not have a high demographic of seniors, those who live in the area are seeking out fitness activities.

The Multicultural Program, coordinated by long-time volunteer Nona Thompson, continued to be well attended. Every month (except in the summer) the program 'travels' to a different country or city and each week of that month a specialized class touches on the food, arts and culture. The last week culminates with a luncheon which is well attended by many seniors in the community. Yeah Nona!

We have continued to offer midday refuge for families on the relatively new "Family Day" Celebrations.

In addition we have six other community celebrations throughout the year!

Youth

Our local Association allocates \$21,000 annually to youth programming for supplies and staff leadership, unlike many other Vancouver Community Centres who have a designated staff position for youth.

TLC is back

This program for special needs youth 13-18 was funded for another year by the Ministry of Children and Families and is the only such program on the west side of Vancouver.

Tiggy Winkle

This preschool has rebounded and there was a survey that revealed that parents would desire lengthening the class by half an hour which we are working towards.

Kits Fitness Centre is the busiest centre in the city. This Park Board facility is on the Ground floor beneath the lobby. The room to the south is owned by the association and on indefinite loan to PB. This room was annexed by the PB due to insufficient funding to a renovation budget in 1999.

Ice Arena

This Park Board facility adjacent to the Community Centre is operated directly by the Park Board and has a new sound system thanks to the perseverance of Maureen Charron, a local Kits resident.

In addition, Leeza Woo, who has been an instructor at Kitsilano for the past 3 years and her bond with both patrons and staff of the facility has made her a great fit as a Program Assistant III with the West Side Arenas -there are 24 staff at peak capacity with Leeza on rinks. They have their own version of Carnival and Fun in February on ice.

Another interesting development for the Park Board, is the Vancouver Gem and Mineral Show booked space and held their show in the arena in August, which is earning revenue from an otherwise unused asset. Can the film industry be far behind?

Negotiations For A New Operating Agreement

After a lapse of a year or two, the PB is offering to enter into negotiations at the end of this month. I expect a new agreement will be signed next year as the parties negotiating have changed in that the parties are much broader based now

Tribute to Front End Staff & Volunteers

YOU are the face the public SEE as we greet them and they experience us.

Very much creative energy and expression is happening within our community driven facility.

Staff and Volunteers work very hard to plan and organize events within the community.

Esprit de Corps is the emphasis on team spirit and team work within an organization, and is a helpful perspective within our work environment. Your community appreciates your efforts!

As this is the end of my term, I would like to thank all the staff for their hard work and dedication to serving the needs of the public. I would also like to thank volunteers, whether they are on our community board, help out in programming areas or activities such as Emergency Social Services. Without all these dedicated, giving people, we would be nothing! Good work team!

Succession

I have been on the Kits board for decades and due to the declining health of my predecessor, Don Murray in 1993, I stepped up and assumed the role of President. It has been my pleasure to have been your President for the last twenty three years, but we now have other experienced persons who are ready to step up into the role, and I will now step down. I ask your support for the new slate nominee for President, Jerry Fast.

Thank you all for your support over the decades!

Respectively Submitted,

Robert Haines

KCCA President

Kitsilano Community Association
Annual General Meeting
Program Committee Report 2015

Staffing - the year wrapped up seeing both Celia DeLuca, the Preschool, Children & Youth Recreation Programmer and Cathy Almaas the Adult & Seniors' Recreation Programmer retiring after many years of excellent service to the Kitsilano Community. Oren Thrush and Janice Kwan skillfully stepped in to cover the many duties of the Recreation Programmers' positions. Jeremy Quan stepped in as PAIII to cover Special Events. Thank you to all for your hard work and flexibility during that time.

Tiggy Winkle Preschool (licensed) - remains popular and well attended. Both the morning spots for the 3 year olds and 4 year olds were fully registered at 20 spots. The afternoon time for the 4 year olds was also fully registered. The afternoon Tuesday/Thursday space for the 3 year olds continues to be the only time where registration is not at maximum. As part of our effort to engage and acquaint the community to our services, we hosted our second Annual Open House in mid-February. We found this time frame to be successful as it is prior to registration for the following school year and allows parents an opportunity to see our school and meet our wonderful teachers. A survey was done as part of a review to the structure of the Tiggy Winkle Program. The main recommendation was to increase the hours for each day. Much thanks to the teachers; Angela Karellas, Shireen Chandra and Jessica Fosbrook who have continued to work hard to provide a nurturing, stimulating, yet calm and friendly environment – creating an important, foundational start to a child's educational journey.

Preschool Programs - Kitsilano continues to offer a variety of wonderful and engaging opportunities for preschoolers and their parents to experience recreation both alone and together. As per patterns in recent years, the most popular programs continue to be Music and Dance activities, followed by physical activity programs.

Children's programs - In general, summer programs remain the most intense participation period. During the rest of the year dance continues to be the strongest activity segment. Private Music lessons such as Piano, Flute, Violin, and Voice all experience solid demand. Taekwondo is also well attended, as is Gymnastics.

Youth programs are largely supported through financial support from Kitsilano Community Centre Association. The Youth lounge is regularly used by local youth, especially during lunch breaks and after school. The most active participation area is in community volunteerism where we have a number of youth that help out on a consistent basis in various projects and events. We are working on strengthening our partnership with VSB and will be collaborating on programs in the upcoming seasons.

The TLC Special Needs Youth Program. This program is for 13 to 18 year olds with mild to moderate developmental challenges, with the specific goal of reinforcing life skills, social skills and recreational experiences. From these skills, greater independence and confidence are fostered and encouraged. It is funded through a contract with the BC Ministry of Children and Families and only opens through referral from BCMCF. TLC is a valuable, intricate and involved program with

specific deliverables required from the Ministry. The resources allocated to this program are ambitious with the expectations from staff and those that support staff, within a general recreation setting.

Adult Programs - Overall, yoga and Pilates classes were quite popular as most classes met or exceeded minimums. A couple of program areas such as martial arts and dance seem to be leveling off or trending downward in terms of registrations. Many of these classes stay open with low registrations with drop in revenue maintaining the health of those classes.

A large number of one day workshops were offered that included health and wellness, financial advice and nutrition. The popularity of one day workshops/seminars was inconsistent as several were canceled in the fall season. For future seasons, a strategic plan will be applied for such classes as well as a room scheduling plan which would maximize room use – particularly for the Board and Meeting rooms.

Our language conversation class, English Corner, is quite popular at Kitsilano. With the recent influx of new immigrants, it would be prudent plan to offer more English language classes as well as other languages in fall 2016.

Seniors' Programs - The Multicultural Program, coordinated by long-time volunteer Nona Thompson, continued to be well attended. Every month (except in the summer) the program 'travels' to different country or city and each week of that month a specialized class touches on the food, arts and culture. The last week culminates with a luncheon which is well attended by many seniors in the community.

Osteofit, Chair Yoga, Flexercise and other older adult fitness classes are relatively popular. An indication that although the community does not have a high demographic of seniors, those who live in the area are seeking out fitness activities.

Special Events

The following events took place at Kitsilano in 2015:

Family Day (February)

Easter Eggstravaganza (April)

Family Toy and Clothing Sale (May)

Picnic in the Park (August)

Halloween (October)

Music with Marnie & Band Mega Concert (November)

Breakfast with Santa (December)

By all accounts, these events were well attended. Staff and volunteers work very hard to plan, set up manage and clean up each of these popular events designed to bring the community together throughout the year. Thanks to all the volunteers and core staff, along with the front office staff, who played their part in creating Kits as a great place to come to!

Respectfully Submitted,
Arlene Brown
KCCA Program Committee Chair

Kitsilano Community Association
Annual General Meeting
Seniors' Committee Annual Report 2015

Kitsilano Community Centre Seniors enjoyed another eventful year in 2015.

Our expanded Multicultural Committee this year enabled us to utilize many volunteers who gave more than 300 hours each month to run this very unique program here at Kitsilano Community Centre. Our journey in our 14th year began in the Canadian Prairies, continuing with Northern China, Northern Italy, Hokkaido Japan and the Cherry Blossom Festival, Greece and Vicky Mitropoulis' 90th Birthday, Polynesia, Portugal, Peru and, a Holiday's Celebration of Light with Christmas, Hanukah and Diwali. So many people from these cultures took an active part in showcasing their history, food, dance and their lives with us. A presentation about the country, the food, cooking, craft, and a luncheon event of each country was very popular. Including our Tiggy Winkle preschool program in our Multicultural Dance events continues to be such enjoyable and valuable intergenerational activity. A big thank you goes to the KCCA for its financial support of our much loved program.

We took part in Picnic in the Park, organizing the Seniors' Fish Pond, which is an annual sell out. A memorial for Helga Sutherland and Gilbert Anderson was held along with their family to celebrate their lives and lengthy service to our Centre.

Our Fund Raising Committee continues in its efforts assisting with our centre's special events by providing a bake sale and concession for the Easter Eggstravaganza, Family Day and the Family Toy & Clothing Sales. We also offered Easter and Christmas basket raffles, which were extremely successful. With the money raised, we have been able to provide a nutritious free lunch at all of our Seniors' Committee monthly meetings. More than 25 people attend each month. In June we held a Seniors Appreciation Day for all Kits CC Seniors with a delicious buffet prepared by the Fund Raising Committee. Our Committee was also very active this year enabling us to provide gifts for everyone at our Christmas Luncheon as well Memorials and Staff Farewells.

Long-time free programs such as Mah Jong, the Book Club and Scrabble are a cornerstone of Maddies' Lounge weekly programs. Some of the 2015 free workshops/clinics were Understanding Dementia, Frauds & Scams, Elder Abuse, Representation Agreements & Living Wills, Chronic Pain, Flu shot clinic, and Hearing Loss. Some of the well-attended programs were Zumba Gold, Chair Yoga, Osteofit, Minds in Motion and the Arthritis Self-Management Program.

We are very grateful for the commitment of Kitsilano Community Centre staff members, particularly to Cathy and Janice, who keep us well organized and help so much in the smooth running of our events.

Respectfully Submitted,
Nona Thompson

Kitsilano Community Association
Annual General Meeting
Fundraising Report 2015

Fundraising plays an important role in supporting the activities and events here at the Centre. The partnership and support of the KCC staff, and the dedication and effort of community volunteers, have provided successful fundraising initiatives that annually benefit many of our programs. Fundraising not only takes the form of direct dollars raised through grants, donations and events, but also includes the savings in cash outlays in the form of goods and services donated by organizations, businesses, and individuals throughout our community. In addition, volunteers provide a valuable range of services and knowledge and have donated over 3000 hours towards various programs and special events during the past year.

The KCCA undertakes several special events each year including, Breakfast with Santa, the Easter Eggstravaganza, Picnic in the Park, and our Customer Appreciation BBQ. We would like to acknowledge our Community Partners and thank them for their ongoing support. Their generous contributions in the form of donations, volunteers, and supplies, bring families and patrons together to enjoy a sense of community over the course of the year. Thank you to our local White Spot, G&F Financial, CIBC, Starbucks, Whole Foods, the 10th Avenue Church and the Vancouver Marathon Society for supporting our special events.

We wish to thank The Vancouver Foundation for their generous grant to assist in the preparation of a report on Inter & Multi-Generational Childcare opportunities within our community. Thank you to the Ministry of Children and Family Services for their continued funding and support of our TLC program and to the Federal Government Youth Employment Strategy for our Summer Camps Grant.

Our Saturday Morning Shower Program led by Penny Rogers, Nicole Bird and Luke Vasak along with our dedicated core of volunteers, assist many of our less fortunate every Saturday morning. A hot nutritional breakfast, showers, clothing and toiletries are available to everyone. Donations, supplies, and volunteers for this program are provided by St. Helen's Church, St. Philips Church, Grace Vancouver Church, St. Augustine's Church, Terra Breads, Starbucks, IGA Market Place, and The Sheraton Wall Centre for all of the towels. Personal services include free monthly haircuts, dental supplies plus referrals and assistance for available social housing. McKechnie and Bayview schools supply Christmas gift bags, socks and toques. Volunteers provide over 1200 hours a year to The Saturday Morning Shower Program. It is a wonderful partnership in community caring and sharing.

Our Older Adults programming benefit from the fundraising efforts of volunteers, as well as the personal donations and contributions from our community partners throughout the year.

2015 was very successful as the fundraising team organized three bake sales, Christmas and Easter Basket raffles, plus a senior's concession during the 2015 Federal Election. Thank you to IGA, Shoppers Drug Mart, London Drugs, Home Depot, Vital Health and Wellness Clinics, and the Co-Operators Insurance Group for helping to make our Older Adult's events so special. Thanks also to Rho Tuttle, Liz Mueller, Joanne Morrison, Nona Thomson, and Cathy Almaas and to all of our Older Adults volunteers for making the 2015 such a success.

Oren Burnspark and Jeremy Quan, lead our fantastic team of KCC youth volunteers. Our youth volunteers donate hundreds of hours annually to support our KCCA Special Events. The fundraising committee wishes to thank these young people for all of their time, energy and skills as their participation saves thousands of dollars each year in labour and is one of the primary reasons these events are able to continue.

In closing we wish to thank our KCC staffs who are always there to ably assist us in organizing and hosting our fundraising efforts throughout the year.

The Kitsilano War Memorial Community Centre Association is a designated registered charity under the Canada Revenue Agency. As such, all donations over \$25.00 are eligible to receive a charitable tax receipt issued by the Association. Donations may be designated to specific programs, items, projects and events. We appreciate any assistance you may provide in helping us deliver the wide variety of activities and events to our families and individuals of all ages.

Respectfully Submitted,
Rosalba Tuttle
KCCA Board Member
Don Shaw
KCCA Vice President

Kitsilano Community Association
Annual General Meeting
Building Committee Report 2015

There were few facility repairs that occurred during this past year.
Some minor facility upgrades were done including:

- Lobby Room – window pane replacement
- Lower Community Center Hallway – lower hallway panel replacement

Going forward in 2016 the Building Committee will be meeting seasonally to do a building tour and identify facility projects to be addressed.

Items such as:

- Providing washroom facility access during the weekend after 5pm
- Installation of an overhead door for Snow's Lounge Kitchen pass through
- Repair of wall in multi-purpose room
- Gym and dance floor refinishing – PB staff
- Repair of dishwasher / sanitizer in multi-purpose room
- Installation of electrical receptacles – deep storage room
- Paper roll rack for proper storage of construction paper
- Investigation of installation of ceiling in Snowy's Lounge
- New carpeting for hallway to Snowy's Lounge.

These items will serve to keep our facilities in optimum working condition to ensure our programs and services occur in a safe and functional environment.

Respectfully Submitted,
Alfred G. Lam
KCCA Building Committee Chair

Kitsilano Community Association
Annual General Meeting
Collaborative Garden Committee Report 2015

The Kitsilano Community Centre Collaborative Garden (KitsCC Collab Garden) enjoyed its second growing season in 2015 and what a year it was! A long, warm summer meant for a lot of watering and a large crop. Spring was short and the heat came quickly into the summer. It was a huge success with lots of kale, kohlrabi, chives, herbs, shiso, beans, garlic, basil, cherry tomatoes, zucchini, swiss chard and more. One tomato plant was at least 6 feet wide and higher which was quite the sight! As well as many pollinator flowering plants such as calendula, sunflowers, marigold, nasturtium, lupine, lavender and poppies. It was a blessing to have a water connection set-up directly at the garden with help from the Vancouver Park Board early in the year. Several fruit trees continue to grow healthily and are being pruned when appropriate to espalier and grow them within reach and against the wall. There are fig trees, persimmon, apple and pear with 7 total trees. We are planning to plant 2 Olive trees in April 2016. The garden space is well received within the community with many folks commenting on its beauty. We often see visitors sitting on the custom hand-made wooden seating made last year for us. There is a garden information sign from which people can get in touch about joining the garden. There are several core and enthusiastic garden members and a few dozen more satellite members that touch base from time to time but may not come to all events and garden related events. This model seems to work well with most people and their ever-changing schedules which allows for flexibility in their level of commitment. The garden group met on average once a month throughout the year (less in winter and more frequently in summer) to plan, discuss, clean the space, plant, harvest and weed the garden. We usually cook something in the kitchen and serve it at our meetings. We had financial support from G&F Financial, Coordinated Kitchens and in kind donations from David Hunter Garden Centre. With this we purchased a leaf blower as well as tools and hoses and soil amendments. The storage shed (located on opposite side of the Centre near the playground) was well used throughout the year for tools, hoses, trellises, wheelbarrows etc. Summer garden party was a success with over 45 people, a talk on butterflies; local artists were showcasing their work on easels in the garden. We also made fresh kale juice from the garden and enjoyed locally made artisan pies and Greek food. A group from CityStudio came to the party to showcase their work and educate everyone on the importance of mason bees. We hope to have a mid-summer garden celebration party annually. In August, we hosted a well-attended pizza making and "presto-pesto" evening, making tons of basil pesto from the garden and sharing it with guests to take home. We also cooked pizza with freshly made dough with arugula, kale and pesto all from the garden. There were many volunteer youth that helped to water and periodically maintain the garden throughout the year. As well, there were a few youth volunteers that helped to plant 100 garlic bulbs in October. In Autumn, 45 people attended a permaculture workshop hosted by Laura Walker discussing food forests and many food forest plants were planted in the garden.\

We are looking forward to another fantastic year in the garden for the eco-system, vegetables, our local community and close friendships to thrive!

Respectively Submitted,
Gabriel Pliska
KCCA Garden Committee Chair

Kitsilano Community Association
Annual General Meeting
Marketing Committee Report 2015

The Association Board of Directors undertook a Strategic Planning Process in the February to April time frame last year, prior to the 2015 AGM. The Plan was developed with the assistance of consultants Kevan Tisshaw and Jessica Pautsch. The consultants identified six Key Result Areas (KRA) for implementation over the five year period 2015-2020. One KRA stated: Generate more connections and engagement between Kitsilano residents. To implement this KRA, the consultants recommended contracting a community engagement coordinator to lead the KCCA development role.

The Association Board decided to prioritize this KRA in conjunction with two other KRAs: to cultivate stronger partnerships with Kits organizations – not-for-profit, commercial and informal; and, to integrate more effectively with Kitsilano-based schools, with a focus on the renovated Kitsilano Secondary and its new Neighbourhood Learning Centre. As a result, a Request for Proposal (RFP) for a Community Engagement Coordinator was issued in June and, at the completion of interviews, Jennifer Ruffelle was hired on a one-year contract with the Association, which began in late August.

A Marketing Committee was formed to work with Jennifer and KCC staff, and to report to the Board of Directors on a monthly basis. The Committee meets on the third Wednesday of each month (except July and August). The Committee members are Jerry Fast, Heidi Henderson, Don Shaw, Gabriel Pliska, Dominique Dyon, Doug Taylor and James Macdonald.

Jennifer has worked very effectively over these first six months to contact many community organizations and resources to determine how we might work together for mutual benefit and support, to identify specific unmet needs in the community which KCC might address, to develop a marketing plan using social media (Facebook, Twitter, Instagram) to inform the community of KCC programs, and to work with KCC programmers and other staff to enhance Association programs and activities. I have attached for your consideration the Community Engagement Report prepared by Jennifer which summarizes the many activities and initiatives undertaken by Jennifer and the Marketing Committee since last September. As you will see, there are many plans in the works for the next six months.

The Committee would like to thank Jennifer for her outstanding work. We feel very fortunate to have someone with Jennifer's impressive range of skills and enthusiasm working with us to implement the Strategic Plan. We would also like to thank the KCC staff for their ongoing support which makes all this good work possible.

Respectfully Submitted,
Jerry Fast
KCCA Vice President

Kitsilano Community Association
Annual General Meeting
Community Engagement Report 2015

How far we've come in 12 months!

This time last year, a majority of us were involved in the strategic planning process, which overwhelmingly and unanimously confirmed the need for the Kitsilano Community Centre Association to increase its presence and representation in the neighbourhood. From that process, the Community Engagement Coordinator position was developed, and just 6 months ago, the project commenced.

Since September, we have seen three Centre Supervisors, seven Programmers/Acting Programmers, and a vibrant addition of new Board members. Amidst this dynamic environment of change and growth, I'm happy to present this overview of some of the achievements we have already realized through the Community Engagement initiative.

- The Community Centre now has a seat on the West Side Seniors Hub, West Side Child Development Hub & West Side Newcomers Hub; consequently, we are in ongoing conversation and relationship building regarding services and opportunities available for each of the above areas of focus.
- Kitsilano Community Centre has taken a leadership role confronting the current crisis in Senior's housing on the West Side. A focus group that includes the West Side's first responders and valuable resources for Senior's housing needs meets at KitsCC bi-monthly
- Kitsilano Community Centre is partnered with Kitsilano Neighbourhood House and UBC, supporting a United Way grant that is studying health and wellness within the senior population on the West Side.
- Kitsilano Community Centre is working with Kitsilano Neighbourhood House with the goal of sharing resources (specifically van/bus use) for future Senior's outings.
- Kits CC has fully repaired its relationship with the Vancouver Foundation, and received a development grant to explore Inter/Multi generational models of child care & engagement
- Feedback was received regarding extending Tiggy Winkle preschool hours. This has been implemented for Fall 2016 registration.
- After learning that Licensed Family Caregivers were an underserved population on the West Side, Kits CC has partnered with West Coast Child Care Resource Centre to provide a regular drop in program for Licensed Family Child Care workers.
- Kits CC now sits on the planning committees for both KitsFest and Khatsahlano. In addition to the organizational relationship building seen via the year-round planning process with organizations such as Canada One Foundation, lululemon athletica, UBC, JoyTV, West 4th BIA, we will have the opportunity to reach well over 100,000 people over 4 days through these events.
- Reflecting the overwhelming request of the Board, Picnic in the Park has been moved back to Sunday, and the Vancouver Farmers Market has been enrolled as a full planning participant for the event.

- Kits CC's working relationship with the West Broadway BIA has never been better – Michelle Barile and I sit on several West Side networks together, and the BIA requested a letter of support from us regarding the renewal of the BIA funding, which several members of City Council personally responded favorably to, acknowledging our engagement with our surrounding businesses. The West Broadway BIA has supported our Breakfast with Santa, worked to realign the Fresh Air Cinema night to correspond with Picnic in the Park, and provides regular opportunity to meet with the business owners and operators of our neighbourhood.
- G&F Financial has become an exceptional partner, and has currently reached out to us for proposals for a large-scale community sponsorship opportunity.
- Kits CC is in regular conversation with instructors from Kitsilano Secondary School regarding volunteer opportunities. We will have a regular seat at PAC meeting beginning in April.
- We have worked with two public artist collectives through the Park Board public arts programs
- Our Social Media audience has increased by 40% in six months. Actual post engagement is substantially higher.
- New programs have been added as a result of our Community Engagement. A great example of this is Peter Ciuffa's "Pasta Famiglia" workshop – completely sold out, with spaces added! We were also able to fill up a hands-on arts program (Mala Making with Oren) for the first time in a while.
- KitsCC has made space for an "In Your Community" bulletin board, highlighting the events at partner organizations we engage with regularly.
- The kitcc.com website is now in the early stages of redevelopment, this may involve logo redesign and coordination of collateral materials (banners, tablecloths, etc.)

Many of the above point to ongoing conversations and relationships within Kitsilano, and Vancouver.

Immediate priorities include:

- Growth of the West Coast Child Care Resource Centre drop in program
- Completion of work in relation to the Vancouver Foundation Development grant
- Identification of ongoing opportunities to align with Kitsilano Secondary School
- Testing of opportunity to Van/Bus share with Kitsilano Neighbourhood House for Senior's day trips
- Hosting a network workshop addressing Seniors Housing issues (April 13)
- Identifying a fitting proposal for G&F Financial's community project
- Vancouver Marathon Volunteer team (May 1)
- Greek Day (West Broadway BIA, June 29)
- Khatsahlano (West Fourth BIA, July 9)
- KitsFest (August 5-7)
- Picnic in the Park (August 14)

Looking toward Fall 2016:

- We hope to move into the second phase of the Vancouver Foundation grant (up to \$75000 to test operation)

- We hope to act upon community feedback regarding need for improvements to the Hobby Room to make it a fully usable/programmable/bookable space (including the need for appropriate storage for the spin bikes, and stroller parking)
- We will have a new & improved website, which may lead to a revisitation of the necessity and function of our Recreation guide
- We are considering the potential and opportunity of the commercial kitchen

It's shaping up to be an action-packed year!

Community Engagement projects are integral to fulfilling the mandate set out by the Association's Strategic Planning work. I fully encourage you to join the Marketing Committee, which discusses and determines my priorities from month to month. We currently meet on the third Wednesday of every month.

If you cannot make it to Marketing, your feedback, questions and suggestions are very welcome. Please email me at jennifer.ruffelle@vancouver.ca - I'm happy to bring your ideas to the committee and ensure they are considered, and acted upon.

Thanks for an excellent, first 6 months. It has been a pleasure getting to know each of you, while increasing our presence in the community. I'm so proud to be part of this organization!

Respectively Submitted,
Jennifer Ruffelle
KCCA Community Engagement Coordinator

Kitsilano Community Association
Annual General Meeting
Ice Rink Report 2015

Kitsilano Ice Rink saw many new beginning and changes this past season. In the spring of 2015, Grant Matsuda took a four month parental leave and upon his arrival moved into the temporary City-wide Programmer position for the Arenas. To backfill his position, Leeza Woo took on the role as Recreation Programmer for the West Region Arenas. Other notable personnel changes included new Program Assistant IIIs for the Learn to Skate program at Kitsilano, Courtney Tam stepped in as Program Assistant III for the first time with great success. She has been an instructor at Kitsilano for the past 3 years and her bond with both patrons and staff of the facility has made her a great fit as a Program Assistant III.

This past August, Kitsilano Ice Rink played host to the Vancouver Gem and Mineral Show. With its success, the Vancouver Gem and Mineral Show hopes to be an annual event at Kitsilano Arena. Other major events at Kitsilano Ice Rink included our Carnival themed Welcome Back Event. Free Popcorn and Cotton Candy along with other treats and prizes brought in the ice season with a sense of fun! Fun in the Arenas was a city-wide initiative this year, which was highlighted with Fun in February. Fun in February featured a series of low-costs events like Onsie-Wednesday and Sport's Team Saturday. Feedback from these events has been quite positive and we are looking into doing something similar next year.



At the end of the calendar year, Kitsilano rink was re-fitted with a new stereo system. Our new stereo system has been a true upgrade from our previous system offering a better audio experience during public skates as mentioned by some of our most loyal and passionate regulars. Another new upgrade and system included the transition from Safari to ActiveNet. For the most part, the transition was smooth and registration numbers for our Learn to Skate program remained relatively the same.

While there were many changes and new additions to Kitsilano Rink this year, we continued to offer our regular programs and services with great success! In the next year some of the things we are looking forward to include installing glass behind the penalty box, hosting the BC Lacrosse tournament along with the Americas Masters Games. As usual, the rink team is dedicated to ensuring the successful completion of these projects along with our regular programming in 2016!

Respectfully Submitted,
Leeza Woo
Acting Rink Programmer II

Kitsilano Community Association
Annual General Meeting
Fitness Centre Report for 2015

The Kitsilano fitness centre was the busiest Fitness Centre in the city of Vancouver in 2015. Staffs continue to do an outstanding job in managing all of the challenges that go along in a Fitness Centre. Also, provided by staff were a wide range of training sessions in the form of introductory orientations, specialized Kinesis orientations, and top quality Personal Training. The Park Board offered an Open house day (Move for health day) in May in the Fitness Centre that was very successful. Also offered once again by the Park Board was a promotion on passes in December.

Once again for the 9th year in a row we hosted a successful BBQ as over 100 patrons attended. Thanks goes out to James MacDonald for his great cooking and Arlene Brown, Rho Tuttle, and Don Shaw for their terrific hospitality.

Respectively Submitted,
Larry Turko
Fitness Centre Programmer II

Kitsilano War Memorial Community Centre Association
Annual General Meeting
Supervisor of Recreation Services Report 2015

Introduction: I want to ensure that I recognize Doug Taylor for his years of exemplary service to the Vancouver Park Board and the many years that he worked at Kitsilano CC as the Supervisor of Recreation Services. Doug's relaxed and competent approach helped to create a positive environment for staff and patrons which is representative of the Kitsilano neighborhood that we serve. I feel very fortunate to have worked with Doug and have embraced much of his approach and want to further his many positive contributions to this community.

I am happy to have another opportunity to work for the Kitsilano community centre patrons and the KCCA Board of Directors and with the Kitsilano staff team. I have had a few previous work stints here and as this was where I did my recreation internship I have fond memories and great attachment to this centre and community. I was not here during the 2015 year, but from all accounts it was a year of growth and change. The change coming from the many changes in the staff team and the growth in the people who stepped up to fill in vacant roles on short notice and kept the facility operating at the high level that is expected. Those that contributed are too numerous to mention, but we are very fortunate to have staff that are committed to the successful operation of this centre and have developed skills that will be valuable for future growth opportunities.

Programs and services: Program revenues were consistent with 2014. Adult programs and Tiggy Winkle preschool increased while preschool was down reflecting a change in local demographics. Thanks to our recently retired Programmers Cathy Almaas, Celia Deluca, and the support they received from Program Assistant 3s, Janice Kwan, Oren Thrush and Jeremy Quan.

I would also like to congratulate Samantha Placzek for being the successful candidate for the acting RFC role and for her leadership with our staff in providing excellent customer service. I would like to thank all the front line staff, Cashiers and Program Assistants for making Kitsilano a fun and welcoming place to recreate.

Fitness and Ice Rink: The invested made by the Park Board in the past few years is continuing to provide benefits to our fitness centre patrons. We are once again the busiest fitness centre in our organization with consistent growth in revenues and participation. Thanks to Larry Turko and his staff for providing their knowledge and support to our patrons as fitness is very relevant in most peoples' lives.

Our ice rink operation continues to provide recreation skating lessons, recreational skating, and ice time for clubs and groups along with rentals. Dry floor continues to add events and offer floor time to leagues. Recognitions to Grant Matsuda and the rink staff for their work in the rink.

Appreciations to our Mechanical Technician Alfredo Labrador and his maintenance staff team of Utility Maintenance Workers and Building Service Workers who keep this ever busy

facility clean and functional. The facility is open throughout the year for long hours and is seldom down because they work hard to keep the facility operating.

Staffing: With the retirement of Programmers Cathy Almaas and Celia Deluca, we were very fortunate to acquire 2 Programmers of equal skill and knowledge in Heather Rooke and Grant Matsuda. Both bring a wealth of programming experience and organizational expertise which bodes well for the future of recreation in our community.

Future: The inclusion of our 2 new Programmers and the skills developed by our Programmer 3's provide us with a strong and talented staff team to build programs and services. The addition of a Community Outreach Coordinator position, which is funded by the KCC Association, allows us to connect with community organizations and agencies which enhance our ability to provide relevant activities and needed services for our community. Jennifer Rufelle brings a vibrant and engaging personality to this role and offers us opportunities to meet with community individuals and groups who have similar goals and objectives. Key areas of development that will be focused on this year are

- Working with the Kitchen Committee to create the future use of the kitchen
- Marketing committee, who are working to apply the findings from the Strategic Plan and enhance relationships within the community.
- Building Committee development as we look to upgrade facilities and identify needed improvements to our recreational spaces.

The JOA renewal is still being worked on with the Park Board and the Community Association and this partnership will help to make Kitsilano Community Centre the hub of community recreation services. Special thanks to President Robert Haines, for his many years of commitment and service, and to the KCCA Board, who are an excellent group of volunteers for making this a productive and enjoyable facility for staff and patrons.

Respectfully Submitted,
Bob Hindley
Supervisor of Recreation Services

Remembering an Honourary Life Member
Dorothea "Dot" Rogers



**IN LOVING MEMORY
OF
DOROTHEA ROGERS**

AUGUST 22, 1916 – APRIL 28, 2015

Married in 1940 Dorothea (Dot) Rogers she had her children during the war, and she lived two or three houses over to the east of Larch on W 13 on the north side—there is a nice new house there now. When working in the community garden a couple of years ago, her daughter walked by and I got updated that she was in the Columbus Home in South Vancouver and enjoying a renaissance of painting. She had graduated from the Van School of Art (which became Emily Carr). Dot became a widow in Canada's Centennial year of 1967. Her husband died when she was 51. They had a place over on Keats Island and I remember she sometimes arrived late to meetings due to traffic delays while coming back from there. From that era she would have known Snowy Thrussel, who was the leader of the group advocating for the Community Centre to be built. The Community Centre was so close to them, I imagine they spent a lot of time over there. Her eldest son just retired from the PB a couple of years ago – loved his job out in nature all the time. The first anniversary of her passing would be one week from tomorrow and had she lived until this 22nd of August, she would have had her 100th Birthday (16 months short!)

Sincerely,
Robert Haines

ROGERS, Dorothea (Dot) (nee Sumner) August 22, 1916 - April 28, 2015 Born in Vancouver, raised in Kerrisdale, she attended Vancouver Art School then married Philip Rogers of North Vancouver in 1940 and settled in Kits. Dot became a long-time active member of the Board of Directors for Kitsilano Community Centre and was awarded a lifetime membership for her service. Phil and Dot enjoyed boating and fishing local waters. In 1960, they bought a waterfront lot on Keats Island and moved their family adventures ashore. Dot always had her bags, dog, and cat ready to go to her cabin. With Phil's passing she started child- minding, including her grandchildren. She shared her creativity, love of nature, and community with everyone. She gardened, walked, hiked, rowed her boat, read, played games, did puzzles, and, with a wonderful memory for poetry, recited whatever was appropriate. Dot was predeceased by her husband Phil (1967), son Douglas (2010), and sisters Betty (Art Hunt), Joan (Louis Morin), and Pat (Art Lang). She is lovingly remembered by her son Bill (Araxie Vyse), daughters Joanne (J-J Lemieux) and Michelle, and grandchildren Zoe, Cameron, Briton, Hilary (Josh Binkley) and Samantha. For the past eight years, Dot resided at Columbus residence. Here, we saw the re- emergence of her inner artist. Dot's heart failed quickly and quietly on April 28, 2015; we thank the staff at Columbus for their wonderful love and care. We couldn't have asked for better.